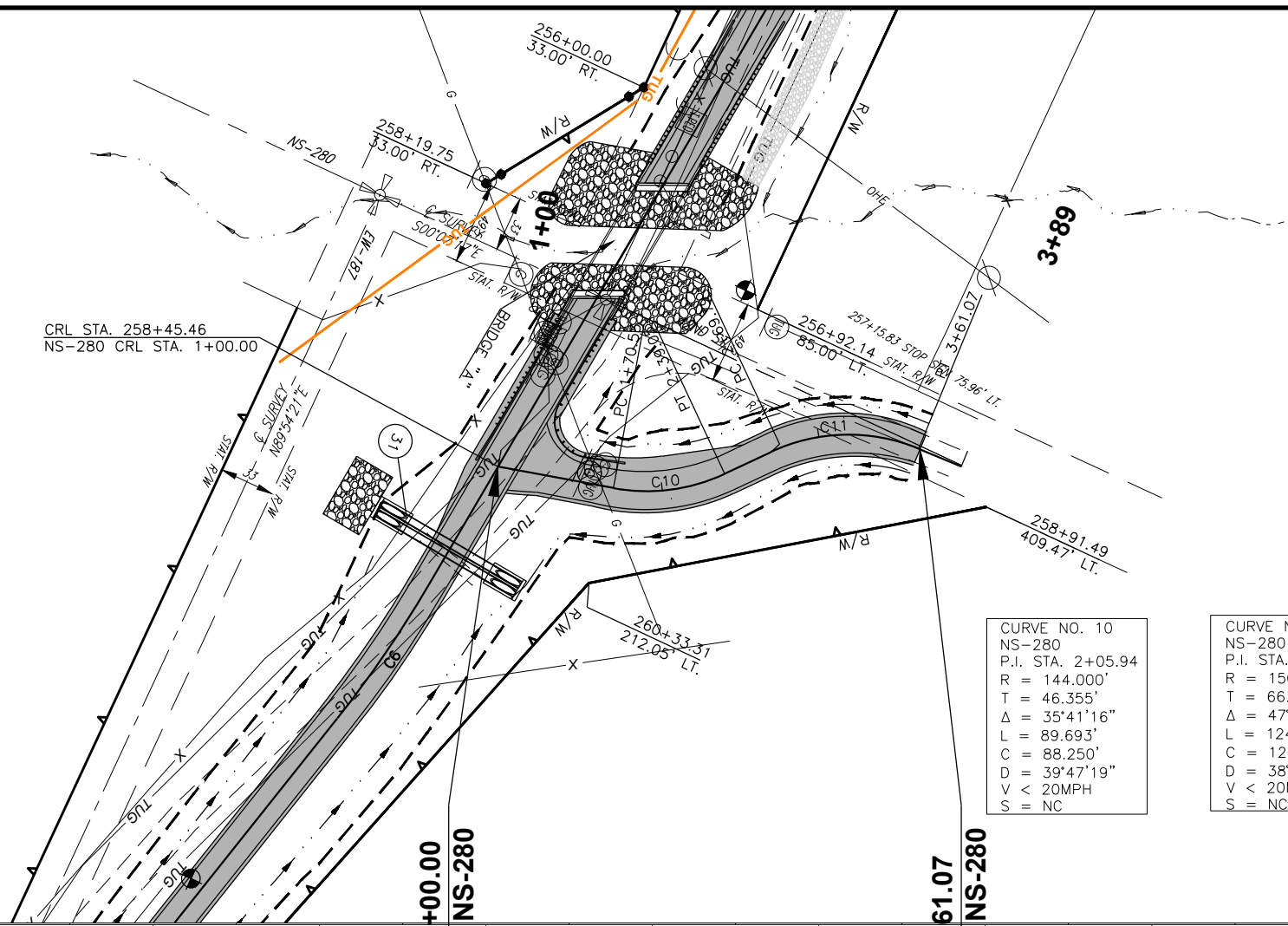


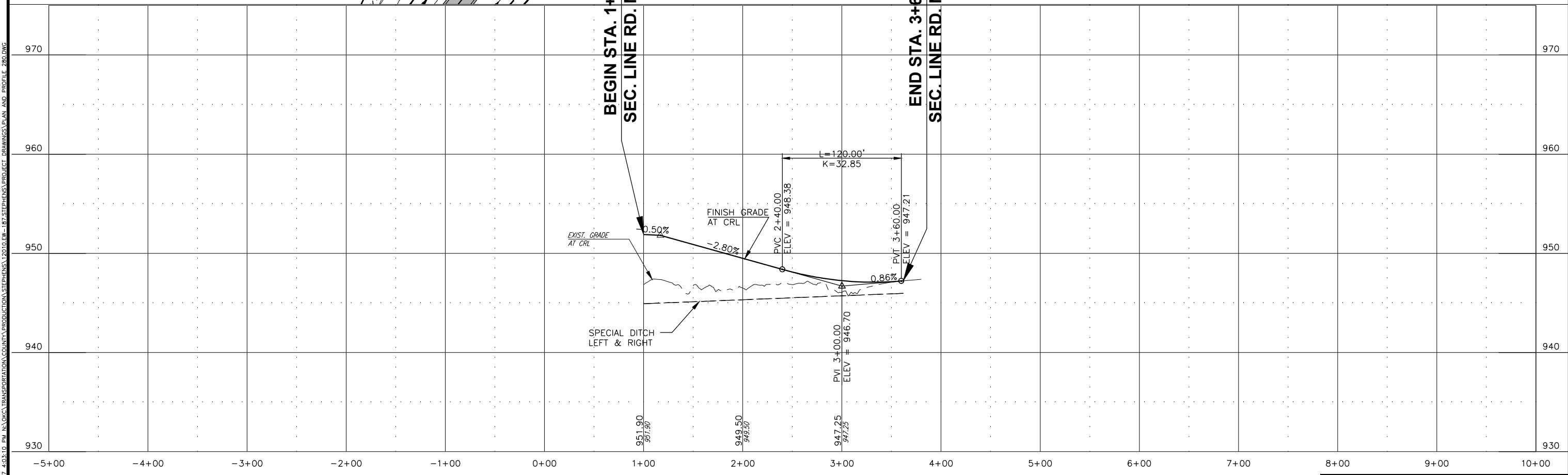
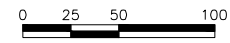
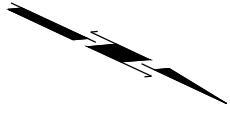
DESCRIPTION	REVISIONS	DATE

NOTE: ALL DISTANCES SHOWN TO RIGHT-OF-WAY, FENCES, UTILITIES, AND OTHER EXIST. OBJECTS ARE FROM ϕ OF SURVEY.



CURVE NO.	NS-280
P.I. STA.	2+05.94
R	144.000'
T	46.355'
Δ	35°41'16"
L	89.693'
C	88.250'
D	39°47'19"
V	< 20MPH
S	NC

CURVE NO.	NS-280
P.I. STA.	3+17.53
R	150.000'
T	66.069'
Δ	47°32'34"
L	124.467'
C	120.927'
D	38°11'50"
V	< 20MPH
S	NC



6/8/2017 4:03:10 PM N:\DATA\TRANSPORTATION\COUNTY\PRODUCTION\STEPHEN\1210.EW-187\STEPHEN\PROJECT DRAWINGS\PLAN AND PROFILE -280.DWG